

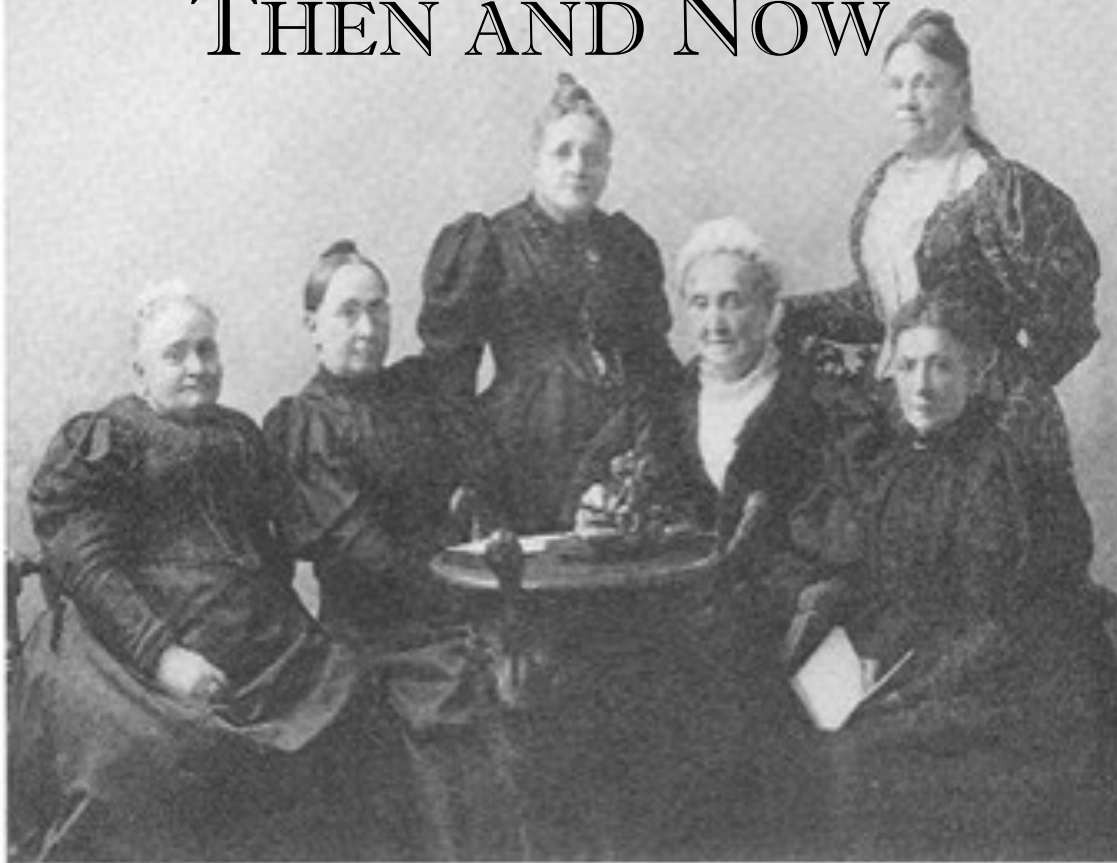
West Ohio Cooperative



# Mission U

**Learning Together** for the **Transformation** of the **World**

## RADICAL DISCIPLESHIP— THEN AND NOW



THE FOUNDERS OF THE WOMAN'S FOREIGN MISSIONARY SOCIETY  
(Taken fifteen years after the organization, when two of the original eight could not be found.)

July 18-21, 2019

GUIDEBOOK

# NOTES FOR ME

## My Classes:

*Practicing Resurrection/Gospel of Mark:*

Study Leader \_\_\_\_\_

Location \_\_\_\_\_

*Women United for Change:*

Study Leader \_\_\_\_\_

Location \_\_\_\_\_

Electives/Activities: \_\_\_\_\_

\_\_\_\_\_

\_\_\_\_\_

\_\_\_\_\_

## In Case of Emergency:

We have EMT's in residence for your needs. If you are feeling ill, have an accident, or have a medical question, contact one of them at the numbers below, or catch up with them in the dining room at meal time:

Jeff Creed: 740-649-3869

Tracey Creed: 740-649-2213

Email:

[traceylenncreed@yahoo.com](mailto:traceylenncreed@yahoo.com)

### Nearest medical center:

Mt Carmel St. Ann's

500 S Cleveland Ave

Westerville OH 43081

(380) 898--4000

Emergency Dept: 898-4040

Westerville Police 882-7444

## Golf Cart Shuttle Service

Our golf carts will help you get around campus to the various facilities. Carts are marked with a Mission u sign, and run before and after all classes and events. Please note that drivers also attend these activities, so are not scheduled to run once the event has started. If you need a ride and don't see a driver after waiting a reasonable time, call 513-267-8126. Look for signs identifying pick-up and drop-off locations at the entrance to the following buildings:

- Campus Center
- Residence—DeVore Hall
- Classrooms—Roush Hall and Courtright Library
- Church of the Master

# TABLE OF CONTENTS

Welcome from Dean .....	4	Schedules	
Giving Opportunities .....	5	Thursday .....	12
Important Policies .....	6	Friday .....	13
Useful Information .....	7	Saturday (4-Day School) .....	14
Electives and Enrichments .....	8	Saturday (Day Sampler) .....	15
Free Choice Activities .....	9	Sunday .....	16
This 'n That .....	10	Worship Leaders .....	17
Class Locations .....	11	Study Leaders .....	18
		Persons in Mission .....	21

## About Mission u

Mission u presents us with an opportunity to study current issues impacting society, learn about the history and mission work of United Methodist Women, and grow in our faith and our relationship with God through worship and song, mission studies, fellowship, meditation, and more. Mission u is open to members and non-members of United Methodist Women.

Mission u is the UMW's premier educational event, and is organized by conferences around the country. We are fortunate in West Ohio to have additional input from the West Ohio Conference UMC, making it a cooperative effort. This year Mission u returns to Otterbein University, with some events scheduled at Church of the Master in Westerville. Please keep an open mind to changes as we settle into our new location.

We hope you enjoy your time here. This Guidebook will help you find your way around, and should provide most of the details of what to expect during the week. It includes your schedule, locations of classrooms and other facilities, descriptions of studies and activities, and more. Keep it with you for reference during the day. If you have any questions, check with the hostess at the hospitality table, and be sure to attend the morning gathering after breakfast each day for updates or last-minute changes to the schedule. Have a wonderful week, and God bless you.

## Building our Legacy . . .

Those eight brave and courageous women in Boston laid a strong foundation, and thousands more have built on it. We celebrate all the women (and men) who have helped shape United Methodist Women into what it is today, and we look forward to continuing the example that has been set for us. In the following pages, take a glimpse into the lives of a few of the bold women who have been instrumental throughout the years in implementing change and improving life for other women, children and families around the world.

# WELCOME

Dear Friends,

Welcome to Mission u! Many of you, like me, have been going to Ohio Northern for what seems like forever, but there are some who remember trekking to Otterbein to attend School of Christian Mission in years past. Now here we are back at Otterbein again, reminding us that while everything seems constant, in reality, everything is constantly changing. It is fascinating how quickly we adjust, settle into place, and fall into easy habits, thinking “it has always been this way.”

As you find yourself embarking on a different path this year, thankfully, you will not be going alone for there are many walking with you. We have a gifted, creative planning team, along with the Otterbein staff, who worked through all the details and challenges of moving Mission u to a new venue. Then there are all of you, the trailblazers, who made a commitment to come and help make Otterbein our new Mission u home.

Can you feel the excitement of new possibilities as we start off on this adventure together? What takes place now is up to us. We are all being asked to make Mission u happen and to shape it into all it can be. It is up to everyone of us to participate to our fullest and share together in this journey.

So my prayer for each of you is to adjust without difficulty, settle in peacefully, fall into a comfortable routine quickly, and simply be content in the midst of any of the inevitable bumps you find along the way. With that, I offer you this Prayer of St. Brendan, the Navigator:

*Lord, I will trust You,  
Help me to journey beyond the familiar and into the unknown.  
Give me faith to leave the old ways and break fresh ground with you.  
Christ of the mysteries,  
Can I trust You to be stronger than each storm in me?  
Do I still yearn for Your glory to lighten me?  
I will show others the care You've given me.  
I will determine amidst all uncertainty always to trust.  
I choose to live beyond regret, and let You recreate my life.  
I believe You will make a way for me and provide for me, if only I trust You and obey.  
I will trust in the darkness and know that my times are still in Your hand.  
I will believe You for my future, chapter by chapter, until the story is written.  
Focus my mind and my heart upon You, my attention always on You without alteration.  
Strengthen me with Your blessing and appoint to me the task.  
Teach me to live with eternity in view. Tune my spirit to the music of heaven.  
Feed me, and, somehow, make my obedience count for You.  
By your grace. Amen*

In loving-kindness,  
Beth Vanoli, Mission u Dean

## Building our Legacy. . .

**Bishop Minerva Garza Carcaño** is a leading advocate for comprehensive immigration reform in the U.S. She has participated in demonstrations and organized marches, and has been arrested, speaking out on behalf of "hard working immigrants seeking only to support themselves and their families who are being treated in ways that not only violate their human and civil rights, but that undermine the very values upon which this country was built."

Carcaño is president of the Board of the General Commission on Religion and Race and serves as the Council of Bishops' official spokesperson on immigration issues. She is the first Hispanic woman to be elected to the episcopacy of the United Methodist Church.



# GIVING OPPORTUNITIES

## Table Offerings

The containers on your classroom tables provide an opportunity to contribute toward the **Mission u Scholarship Fund**, which provides partial scholarships to those who might otherwise not be able to attend. We want to assure that everyone interested in mission has the opportunity to share in this wonderful experience of Mission u.

## Worship Offering Distribution

Saturday's worship offering will be divided between UMW Mission Giving and the Methodist Border Mission Network.

[Mission Giving](http://www.unitedmethodistwomen.org) allows the work of United Methodist Women to reach far beyond the church walls and into the lives of women, children and youth around the world who are often outside the bounds of traditional ministries. Mission Giving contributes to missions, spiritual formation, programs for membership development, and outreach in the US and international communities. Learn more about the organizations we support at: [www.unitedmethodistwomen.org](http://www.unitedmethodistwomen.org).

The [Methodist Border Mission Network](http://www.methodistbordermissionnetwork.org), through church partnerships, helps to provide shelter and care for refugees and immigrants traveling to and through our southern border. The Network helps supply Conference refugee/immigrant ministries with needed items and/or funds through the help of UMCOR and the Medicine Box. Our Bishops along the Mexico-U.S. border do much advocacy for Immigration Reform, along with the United Methodist Task Force on Immigration.

## Miles for Missions

We're tracking our steps to raise money for missions! Use your fitbit or other activity tracker to measure your steps around campus this week at Mission u. Please visit the hostess at the hospitality table during the dinner hour each day to report your step totals—daily cumulative totals will be reported in the newsletter. All money collected, and your final numbers, are to be turned in during dinner on Saturday. Results and winners will be announced during the Saturday evening program and UMW birthday celebration.

If you don't have sponsors yet, pick up a form at the hospitality table, then sponsor yourself and/or ask your friends to sponsor you. Have sponsors pay when they pledge, and make checks out to Mission u. Proceeds will be donated in equal parts to the **United Methodist Women Legacy Fund** and **Bishop Judith Craig Children's Village, Liberia, Africa**. Established in 2000 to provide care for children left orphaned by the country's civil war, the Village provides much needed daily necessities such as food, housing, health care, counseling, and education.

## Building our Legacy . . .

**Bishop Judith Craig** was only the third woman elected as a United Methodist bishop. She brought a robust sense of humor and eloquent, inspiring preaching style to her pioneering role. Craig was the first woman invited by the Council of Bishops to address the denomination's General Conference in 1996, where she called on Methodists to be 'a holy community that embraces sexuality as a good gift of creation,' but not to define sexuality 'in ways that exclude persons from full participation in the life of the church.' She challenged the church to commit to full inclusion and acceptance of the LGBTQ community.

Susan Laurie, a longtime activist for LGBTQ equality in the church, said Craig "tried to create some breathing room for queer people." She spoke at the Kairos CoMotion event in 2002 and encouraged radical inclusion. When she gave me a tour of her beloved Methodist Theological School of Ohio she was eloquent about God's love for us all, and down-home enough to be wearing a flannel shirt. She let me up on her shoulders to see farther than I had imagined, and she invited others as well."

In retirement, Craig became the bishop in residence and visiting professor of leadership at MTSO. The Bishop Judith Craig Scholarship Endowment was named in her honor. And in 2000, the Bishop Judith Craig Children's Village was established in Liberia to provide care for children left orphaned by civil war.



# IMPORTANT POLICIES

## Keys, Swipe Cards, and Checkout

If you are staying with us on campus this week, you have been issued a swipe card for access to the dorm and a room key. Please return both the card and key to the Campus Center hospitality table on Sunday morning, NO LATER THAN NOON! The fee for a lost or not-returned key is \$80, for a swipe card, \$10.

## Recycle!

Recycling bins are provided in each residence hall and other buildings throughout the campus. Please recycle all paper, plastic, glass and aluminum by placing them in the appropriate receptacle. Trash should not be placed in recycling bins. Inappropriate use of recycling containers will be treated as damage.

## Cell Phones

Please silence your phone during worship, class sessions, and other programs.

## Quiet Hours

Please observe quiet hours in the residence hall from 11:00pm to 6:00am.

## Smoking

Otterbein University maintains a smoke free environment in all buildings; smoking is prohibited within 20 feet of any campus facility.

## Respectful Communication Guidelines

©2013 Kaleidoscope Institute

During classroom activities, please practice the following:

R = Take RESPONSIBILITY for what you say and feel without blaming others.

E = Use EMPATHETIC listening.

S = Be SENSATIVE to differences in communication styles.

P = PONDER what you hear and feel before you speak.

E = EXAMINE your own assumptions and perceptions.

C = Keep CONFIDENTIALITY.

T = TRUST ambiguity, because we are not here to debate who is right or wrong.

## Building our Legacy . . .

**Anna Oliver:** A century ago few women in our church served as evangelists. A few held a "Local Preacher's License," the first step toward ordination, but until Anna Oliver came along, no woman pressed the matter of ordination and full clergy rights among the Methodists. After receiving a Masters Degree with honors from a New York woman's college in 1862, Oliver taught school in Connecticut and dabbled in temperance work. Following the Civil War she served as a home missionary teaching black children in Mississippi. She resigned a year later when she discovered that the Mission Board was paying male teachers twice as much. She felt called to the ministry and, despite major obstacles, earned the bachelor of divinity degree from Boston University in 1876. She was the first woman in America to attain that degree. Oliver served pastorates in New Jersey and New York, and supported by her New York City parish, she brought the first test case on the ordination of women before the 1880 General Conference of the Methodist Episcopal Church. Although the Church refused to permit women to be ordained at that time, Anna Oliver served as a powerful model for women of her generation. It would take 75 more years before full clergy rights were granted to women.



# AND USEFUL INFORMATION

## **Parking**

Parking is available for our use at any campus parking lot **except** for the Cowan/Admissions lot at College Ave and South Grove St. No sticker is required for our vehicles.

## **Youth Program**

Youth activities will be held in the Rike Physical Education Building. Youth are divided into two age groups (High School and Jr High), and will participate in age-appropriate activities.

## **Young Adults**

Additional activities have been designed for young adults, ages 19-25. See schedule for details.

## **Hospitality**

The Hospitality table is where you can get answers to your questions. Stop by if you need directions or other information, and to get copies of our daily newsletter and documents such as the mission walk sponsorship form. This year we will have two Hospitality Table locations—one in the Campus Center lounge and one in Roush Hall 1<sup>st</sup> floor lobby. Hospitality hosts will rotate between locations based on where activities are scheduled.

## **Meals and Dining**

Most meals will be served in the school cafeteria (2<sup>nd</sup> floor campus center), which offers a variety of choices, so look around and see what's available. Hospitality hosts will be on hand to assist with carrying food and drinks. On Friday and Saturday, box lunches will be delivered to Roush Hall, 2nd Floor Lobby. Pick up your lunch and enjoy it where you wish—stay in the classroom; go to one of the lobbies; if weather permits, dine *al fresco* at a table on the patio; or join us in room 210 to meet and visit with our mission partners.

- The 4-day with housing program includes all meals.
- The 4-day commuter program includes lunch and dinner only, with breakfast on your own.
- The 1-day sampler includes lunch only. Day participants who wish to stay for Saturday evening activities are responsible for making their own dinner arrangements. There are many excellent dining options within a short drive of the campus.
- Between-meal snacks are not provided. The Express Snack Bar in Roush Hall will be open to purchase refreshments.

## **Class Locations**

Classes for 4-Day Program participants will be held in Roush Hall. Your name tag indicates the number of the classroom where you will attend classes for both studies. Classroom assignments and corresponding study leaders are listed in the Class Locations table on page 11.

Day Program participants will attend classes and some programs in Courtright Memorial Library, with shared activities in Roush Hall, Campus Center, and Church of the Master.

## **Health and Wellness**

We hope that your time here is free of injuries or health issues, but if you do need help, whether it is a serious injury or a headache, our EMTs are here to assist you. Catch up with them after class, or in the cafeteria during meals, or call them for urgent needs: Jeff 740-649-3869; Tracey 740-649-2213.

The lounges in the dorm include kitchen facilities, where you may store any medications, nutrition supplements, etc. that require refrigeration. Please clearly label anything you place in this shared space with your name, and be respectful of the property of others.

# ELECTIVES, ENRICHMENTS,

## **Morning Gatherings**

Join us for a short get-together to share a brief devotion and prepare for the day. This is the time to hear about any last-minute schedule changes, additions, or other important announcements. Held each day after breakfast before we head to class. LOCATION: Campus Center Lounge

## **Daily Worship Services**

Join us each day as we worship together with prayer, music, scripture, and an insightful message. See *schedule for daily times*. LOCATION: Church of the Master Sanctuary

## **Friday and Saturday Evening Programs**

Join us on Friday and Saturday evening for interesting programs to complement our mission studies and add to your experience, with lots of fun and participation. LOCATION: Friday, Battelle Fine Arts Center/Riley Hall; Saturday, Campus Center Lounge

## **Enrichment —A Living Wage for All Workshop**

United Methodist Women's Living Wage for All Campaign seeks to engage members as allies in passing state and local legislation that lays the base for a living wage and paid leave for everyone. The living wage is what it takes for a family to meet basic needs of housing, food, transportation, utilities, etc., in their locale. United Methodist Women joins faith and labor coalitions working to raise the minimum wage to \$15 per hour; but that's still below the living wage, and that alone will not guarantee a living wage for all families. Domestic workers, tipped workers, farm workers, and immigrant workers were excluded from New Deal labor legislation and continue to be excluded from some labor rights today. This is a racial justice issue as well as an economic justice issue. *Join us on Friday or Saturday during Free Choice Activities*; LOCATION: Roush Hall, Room 116

## **Social Action Information and Living Wage Letter Writing Tables**

Stop by and learn about the latest issues facing today's society. Send a letter to your legislator urging him/her to support issues important to United Methodist Women and the United Methodist Church. Sample letters reflecting the official position of the United Methodist Women's organization are available. *Ongoing*. LOCATION: Roush Hall, 2nd Floor Lobby

## **Conversations with Persons in Mission**

Visit with mission personnel and learn about what they are doing in the communities they serve. Join the conversation *Friday and/or Saturday during Free Choice Activities, or join us during lunch*; LOCATION: Roush Hall, Room 210

## **UMW District Officer Updates**

Local and District Presidents, Treasurers, and members of Committees on Nominations are invited to join conference officers. Bring your questions and ideas to share with your counterparts in this informal session. *Friday during Free Choice Activities*; LOCATION: Courtright Library

## **United Methodist Women Update-General Session**

All United Methodist Women are welcome to join in a fun, informative session with conference officers. Come with your questions or ideas to share, and hopefully you'll leave energized and encouraged! *Saturday during Free Choice Activities*; LOCATION: Courtright Library



# AND FREE CHOICE ACTIVITIES

## Healthy & Fit

In these sessions you will learn to use exercise equipment such as small balls, resistance bands, and weights to improve flexibility and increase strength. *Friday during Free Choice Activities*; LOCATION: Campus Center Lounge

## Hymn Sing

Like to sing? Join us as we celebrate the Holy Spirit through different styles of music—traditional hymns, contemporary praise songs, gospel, and more. *Saturday during Free Choice Activities*; LOCATION: Campus Center Lounge

## Program Resources Room

Get study books for your classes, books from the United Methodist Women Reading Program, Bibles, and other United Methodist Women resources, including some free items. In general, the resource room is open during free time. Specific hours will be posted at the entrance and at the hospitality table. LOCATION: Roush Hall, Room 426

## Video Viewing Room

Spend some time here watching videos and photo collections on a wide variety of topics, including social justice topics, historical clips about United Methodist Women, tributes to former leaders, stories of UMW members in mission, and more. *Friday and Saturday during Free Choice Activities*; LOCATION: Roush Hall, Room 426

## Meditation Room

Visit the meditation room at any time for quiet contemplation and meditation in a peaceful setting. Devotional resources are available. *Ongoing*; LOCATION: *Roush Hall, Room 338*

## Movie Night

Join your friends for an inspiring movie that will enhance your understanding of our study topics. Movies are shown in the dorm, so come in your jammies if you wish! *Thursday evening*; DeVore Residence Hall, 1st and 2nd floor lounges

## Centering Prayer

Centering Prayer is a discipline of intentional silence and stillness. It is a time when we practice seeing things in their wholeness (Ephesians 3:14-21). Helpful practice to begin and end your day *Friday and Saturday*; LOCATION: *DeVore Residence Hall*,

## Building our Legacy . . .



**Caroline Elizabeth Merrick** (1825-1908) was an American writer and temperance worker. She is the author of *Old Times in Dixie Land: a Southern Matron's Memories*. Merrick was a very successful platform orator and her chief talent was in impromptu speaking. She favored women's suffrage, and was the first woman of Louisiana to speak publicly on behalf of women. She addressed the State Convention in 1879, and assisted to secure an article in the Constitution making all women over 21 years of age eligible to hold office in connection with the public schools. It required considerable moral courage to side with a movement so cruelly derided in the South, but, supported by her husband, she always worked for the emancipation of women through her writing, defining the legal status of women in Louisiana. She was a valued correspondent of several leading women's journals, and served as president of the Woman's Foreign Missionary Society of the Methodist Episcopal Church.

# THIS'N THAT

## Wi-Fi Access

Guests may connect to the Otterbein network at: user name *Summerconf*; password *Summerconf2019*  
Or connect to Church of the Master network at: user name *chmaster-guest*; password is *UMCguest*

**Find Us Online:** [www.westohioumw.org/mission-u](http://www.westohioumw.org/mission-u);

**Facebook:** [www.facebook.com/WOCMISSIONu](https://www.facebook.com/WOCMISSIONu)

## News and Updates

*News and Updates* is issued periodically by our conference UMW, with news of upcoming events, mission reports and ideas, updates from National, and more. Subscribe at the bottom of any page of our website.

The Mission u edition of *News and Updates* has news and photos from around campus, important reminders, and program details. Printed copies are available at the hospitality table each day; or you can read it on your electronic device. If you provided us with an email address during registration, you will receive the newsletter by email. You can also access it through our website or Facebook.

## Share your Experience

We'd love to publish your stories and photos during the week! If you have any information or pictures you would like to share, please send by email to [marystephens1947@gmail.com](mailto:marystephens1947@gmail.com), or text to 614-271-3480.

**Mailing address for Otterbein:** 1 South Grove Street, Westerville OH 43081

## Helpful Contact Numbers:

Otterbein summer camp office: 614-823-1371 (maintenance/facilities/keys/etc)

School Dean, Beth Vanoli: 937-901-9649

Assistant Dean, Rev. Don Wilson: 614-271-2666

Jr High Youth Coordinators, Jinnah Walker: 513-605-0200; Ericka Ankney: 937-580-1726

Sr High Youth Coordinators, Alisa Jordan and Jerry Drew: 513-400-9836

## Building our Legacy . . .

**Hillary Rodham Clinton's** storied personal and political career includes lawyer, law professor, writer and public speaker, politician, Secretary of State, U.S. Senator, First Lady of both the State of Arkansas and the United States, and the first woman ever to earn a major party's nomination for president. The courage she demonstrated in the face of vicious criticism and discriminatory treatment during the bitter election, and the grace with which she conceded, serve as inspiration for us all.

Hillary has always been an activist for women, children and families, bringing issues like health care reform and women's rights to the national spotlight. During her postgraduate studies, she served as staff attorney for the Children's Defense Fund and as a consultant to the Carnegie Council on Children. In 1977, she cofounded Arkansas Advocates for Children and Families, a state-level alliance with the Children's Defense Fund. In her book, *It Takes a Village: And Other Lessons Children Teach Us*, she stresses that it takes the entire community to help children develop to their full potential; it takes parents, churches, schools, businesses and others. Hillary fought for universal health care long before it was popular. As First Lady, she chaired the Task Force on Health Care Reform, helping to lay the groundwork for the Affordable Care Act and clearing the way for the Children's Health Insurance Program, which provides health care to more than eight million children. In 1994, she championed the Violence Against Women Act, and helped create the Department of Justice's Office on Violence Against Women. She supported the 1997 Adoption and Safe Families Act, and lobbied Congress for the 1999 Foster Care Independence Act.

Hillary is a lifelong Methodist and friend to United Methodist Women. We have been honored with her addresses at both General Conference 1996 in Denver, and UMW Assembly 2014 in Louisville KY.



# CLASS LOCATIONS

## 4-DAY STUDIES

Class Title	Leader/Facilitator	Group No.	Location
Spiritual Growth Study: <i>Practicing Resurrection: The Gospel of Mark and Radical Discipleship</i>	Rev. Dr. Todd Anderson	1	Roush Hall Room 210
	Rev. Karen Brantley	2	Roush Hall Room 116
	Rev. Vernagaye Sullivan	3	Roush Hall Room 118
	Don Hayashi	4	Roush Hall Room 117
Special Anniversary Study: <i>Women United for Change: 150 Years in Mission</i>	Marcia Florkey	1	Roush Hall Room 210
	Pat Marks	2	Roush Hall Room 116
	Rev. Jeannine Walker	3	Roush Hall Room 118
	Jane Benner	4	Roush Hall Room 117

## DAY SAMPLER STUDIES

<i>Practicing Resurrection: The Gospel of Mark and Radical Discipleship</i>	Todd Anderson	Library Room 124
<i>Women United for Change: 150 Years in Mission</i>	Jane Benner	Library Room 124

## ELECTIVES, ENRICHMENTS, AND FREE CHOICE ACTIVITIES

Title	Leader/Facilitator	Location
Enrichment: <i>A Living Wage for All</i> (Fri/Sat)	Joan Johnson	Roush Hall Room 116
Conversations with Missionaries (Fr/Sat)	Carlene Triplett	Roush Hall Room 210
UMW District Officers (Fri)	Connie Hook/Janis Kleine	Library
UMW Leadership Development (Sat)	Jeanne Long	Library
Healthy & Fit (Fri)	Tracey Creed	Campus Center Lounge
Hymn Sing (Sat)	Justin Williams	Campus Center Lounge
Video Viewing and Program Resources	Becky Ruple/ Denise Bentley	Roush Hall Room 426
Meditation Room (Thurs/Fri/Sat)	Self-Guided (Sharon Wildermuth)	Roush Hall Room 338
Friday Evening Program	Don Wilson	Battelle Fine Arts Center/Riley Auditorium
Saturday Evening Program	Don Wilson	Campus Center Lounge
Morning/Evening Centering Prayer	Beth Vanoli	DeVore Residence Hall

# THURSDAY SCHEDULE

TIME	ACTIVITY	LOCATION
9:00-10:30	Check-in	Campus Center Parking Area
10:45-11:15	Welcome Gathering	Campus Center Lounge
11:15-12:00	Lunch	Campus Center Cafeteria
12:30-2:00	<i>ADULTS: Spiritual Growth Study, Practicing Resurrection: The Gospel of Mark</i> <i>JR YOUTH: Class</i> <i>SR YOUTH: Activity</i>	See Class Locations, page 11  Rike Center Room 202 Rike Center Lounge
2:00-2:15	Break	
2:15-3:45	<i>ADULTS: Special Anniversary Study, Women United for Change: 150 Years in Mission</i> <i>JR YOUTH: Activity</i> <i>SR YOUTH: Class</i>	See Class Locations, page 11  Rike Center Lounge Rike Center Room 202
3:45-5:00	<i>ADULTS: Break</i> <i>YOUTH and YOUNG ADULTS: Special Joint Activity</i>	Rike Center
5:00-6:00	Dinner	Campus Center Cafeteria
6:30-7:45	Evening Worship with Communion-Rev. Amy Aspey	Church of the Master
8:30	Movies	DeVore Residence Lounges
11:00	Quiet Time	DeVore Residence

## Building our Legacy . . .

**Rev. Dr. Rose Mary Denman** in 1987 was the first United Methodist minister to be brought to a church trial for her identity as a “self-avowed, practicing homosexual.” Her journey is chronicled in her book, *Let My People In: A Lesbian Minister Tells of Her Struggles to Live Openly and Maintain Her Ministry*.

In 2004, **Rev. Beth Stroud** said she knew what to expect when she told her Philadelphia congregation in 2003 that she was a lesbian—a church trial, a guilty verdict, and a vote to strip her minister credentials. All three happened. Many others have followed the same path and endured the same pain.



Decades later, the debate over homosexuality in the church continues, drawing intense national attention to the matter. As the church continues to struggle with the issue, United Methodist Women remains focused on being in ministry with all people and providing the creative, supportive fellowship called for in its Purpose.



# FRIDAY SCHEDULE

TIME	ACTIVITY	LOCATION
6:30-7:00	Morning Centering Prayer	DeVore Residence Hall
7:00-8:00	Breakfast	Campus Center Cafeteria
8:00-8:30	Morning Gathering	Campus Center Lounge
9:00-11:00	<i>ADULTS: Spiritual Growth Study, Practicing Resurrection: The Gospel of Mark</i> <i>JR YOUTH: Class</i> <i>SR YOUTH: Activity</i>	See Class Locations, page 11 Rike Center Room 202 Rike Center Lounge
11:00-11:15	Break	
11:15-12:30	Free Choice Activities Enrichment: A Living Wage for All Visit with Missionaries Healthy & Fit UMW Officer Meetings Video Viewing and Program Resources Room Meditation Room	See Class Locations page 11
12:30-1:30	Lunch (Box Lunches)	Roush Hall, 2 <sup>nd</sup> Floor Lobby
1:30-3:30	<i>ADULTS: Special Anniversary Study, Women United for Change: 100 Years in Mission</i> <i>JR YOUTH: Activity</i> <i>SR YOUTH: Class</i>	See Class Locations, page 11 Rike Center Lounge Rike Center Room 202
3:30-4:00	Break	
4:00-5:00	Worship-Tracy Chambers	Church of the Master
5:00-6:30	Dinner	Campus Center Cafeteria
7:00-9:00	Evening Program	Battelle Fine Arts/Riley Auditorium
10:00-10:20	ADULTS: Evening Centering Prayer YOUTH: Vespers	DeVore Residence Hall Rike Center, Room 202
11:00	Quiet Time/Lights Out	

# SATURDAY (4-DAY) SCHEDULE

TIME	ACTIVITY	LOCATION
6:30-7:00	Morning Centering Prayer	DeVore Residence Hall
7:00-8:00	Breakfast	Campus Center Cafeteria
8:00-8:30	Morning Gathering	Campus Center Lounge
9:00-11:00	<i>ADULTS:</i> Spiritual Growth Study, <i>Practicing Resurrection: The Gospel of Mark</i> <i>JR YOUTH:</i> Class <i>SR YOUTH:</i> Activity	See Class Locations, page 11  Rike Center Room 202 Rike Center Lounge
11:00-11:15	Break	
11:15-12:30	Free Choice Activities Enrichment: A Living Wage for All Visit with Missionaries Hymn Sing UMW Leadership Development Video Viewing and Program Resources Room Meditation Room	See Class Locations page 11
12:30-1:30	Lunch (Box Lunches)	Roush Hall, 2 <sup>nd</sup> Floor Lobby
1:30-3:30	<i>ADULTS:</i> Special Anniversary Study, <i>Women United for Change: 100 Years in Mission</i> <i>JR YOUTH:</i> Activity <i>SR YOUTH:</i> Class	See Class Locations, page 11  Rike Center Lounge Rike Center Room 202
3:30-4:00	Break	
4:00-5:00	Worship – Rev.. Anna Guillozet	Church of the Master
5:00-6:30	Dinner	Campus Center Cafeteria
7:00-9:00	Evening Program	Campus Center Lobby
10:00-10:20	ADULTS: Evening Centering Prayer YOUTH: Vespers	DeVore Residence Hall Rike Center, Room 202
11:00	Quiet Time/Lights Out	

# DAY SAMPLER SCHEDULE

TIME	ACTIVITY	LOCATION
8:00-8:45	Check-In	Campus Center Parking Area
8:45-9:15	Welcome Gathering	Library, Room 124
9:30-11:15	Special Anniversary Study: <i>Women United for Change: 150 Years in Mission</i>	Library, Room 124
11:15-12:30	Free Choice Activities Enrichment: A Living Wage for All Visit with Missionaries Hymn Sing UMW Leadership Development Video Viewing and Program Resources Room Meditation Room	See Class Locations, page
12:30-1:30	Lunch	Roush Hall, 2 <sup>nd</sup> Floor Lobby
1:30-2:00	Special Activity	Library, Room 124
2:00-2:15	Break	
1:30-3:30	Spiritual Growth Study, <i>Practicing Resurrection: The Gospel of Mark</i>	Library, Room 124
3:30-4:00	Break	
4:00-5:00	Worship – Rev. Anna Guillozet	Church of the Master
5:00-7:00	Dinner on your own (optional)	
7:00-9:00	Evening Program (optional)	Campus Center Lounge

## Building our Legacy . . .

Mrs. Miriam Brock and Rev. Sallie Crenshaw: As United Methodist Women celebrate its 150th anniversary, the Bethlehem Center in Chattanooga, TN celebrates two Methodist women who helped it become the community safe haven it is today. The Center was born out of two separate ministries: Wesley House, a day care and Kindergarten established in 1920 by Mrs. Miriam Brock; and the Good Shepherd Fold day care started in 1948 by Reverend Sallie Crenshaw. In addition to day care services, the



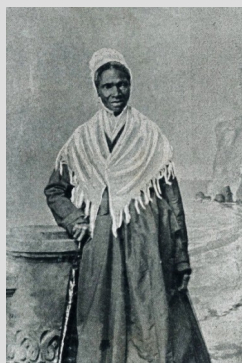
Bethlehem Center now hosts summer camps, Boy and Girl Scouts, community development activities, church on Sundays, and Bible studies throughout the week. Rev. Crenshaw and Mrs. Brock's shared dedication to children and the advancement of justice for all people remains a driving force in the programs and practices of the Center today. The Bethlehem Center is excited to celebrate its Centennial Birthday in 2020, and the 150th anniversary of the United Methodist Women in 2019!

# SUNDAY SCHEDULE

TIME	ACTIVITY	LOCATION
7:00-8:00	Breakfast	Campus Center Cafeteria
8:00-8:30	Morning Gathering	Campus Center Lounge
9:00-10:30	Spiritual Growth Study, <i>Practicing Resurrection: The Gospel of Mark</i>	See Class Locations, page 11
10:30-10:45	Break	
10:45-12:15	Class, <i>Women United for Change: 150 Years in Mission</i>	See Class Locations, page 11
12:15-1:30	Lunch	Campus Center Cafeteria
1:30-2:30	Closing Worship/Communion-Jane Benner	Church of the Master

Thank you for coming, and have a safe trip home!

## Building our Legacy . . .



**Sojourner Truth** (1797-1883) A former slave, Sojourner Truth became an outspoken advocate for abolition, temperance, and civil and women's rights in the nineteenth century. She was born Isabella Bomfree in 1797. She was bought and sold four times, and subjected to harsh physical labor and violent punishments. In 1827, she ran away to a nearby abolitionist family, who bought her freedom and helped her successfully sue for the return of her five-year-old-son who had been illegally sold into slavery in Alabama.

After moving to New York City, she participated in religious revivals and became a charismatic speaker. In 1843, she became a traveling Methodist preacher and adopted the name Sojourner Truth, to identify her work of traveling and speaking the truth.

In 1851, Truth delivered her famous Ain't I a Woman speech at a women's rights conference in Akron, Ohio. In her remarks, she challenged prevailing notions of racial and gender inferiority and inequality by reminding listeners of her combined strength (she was nearly six feet tall) and female status.

Until her death, Truth continued speaking nationally and helped slaves escape to freedom. During the Civil War she urged young men to join the Union cause and organized supplies for black troops. After the war, she was honored with an invitation to the White House and became involved with the Freedmen's Bureau, helping freed slaves find jobs and build new lives. While in Washington, DC, she lobbied against segregation, and in the mid 1860s, when a streetcar conductor tried to violently block her from riding, she ensured his arrest and won her subsequent case.



# WORSHIP LEADERS



**Thursday:** Rev. Amy Aspey

amy@shortnorthchurch.org; 614-268-8626

Amy is an ordained deacon in the United Methodist Church and serves as the Lead Pastor at Short North Church. She is committed to living out Short North Church's motto, "an urban community for all people." Amy has been in professional ministry since 2004 and is a graduate of Princeton Theological Seminary (M.Div, '04) and Ohio Northern University (BA'01). Amy is passionate about wellness and integrated spirituality and is a Certified Yoga Teacher. She also founded YoWo (Yoga +Worship) that is part of the Short North Church ministry. Amy and her husband, Ryan, enjoy traveling, delicious food and calling Columbus home.



**Friday:** Rev. Anna Guillozet; annaguillozet@gmail.com; 419-957-5179

Rev. Anna Guillozet loves Jesus. She is a married, marathoning, ministering mom, married to Garrett for 11 years, training for her 4th marathon, an ordained elder, and mother of the most awesome 4 year old daughter, Graham. She is blessed to serve as Senior Pastor at Linworth United Methodist Church.



**Saturday:** Tracy Chambers, CLM

Tracy was elected by our laity as West Ohio's Director of Lay Speaking Ministries at this year's Annual Conference. She is a member of Gaines UMC where she has served as lay leader, liturgist, and Disciple bible study and small group studies facilitator. Tracy attended Wittenberg University and the University of Cincinnati College of Law. She starts out well-acquainted with West Ohio's Lay Servant Ministries, as she is a Certified Lay Servant and Certified Lay Minister. Tracy also serves as a member of the Connectional Ministries Leadership Development Lead team and the Wesley Foundation Board of Trustees for the University of Cincinnati campus ministry.



**Sunday:** Jane Benner

bennerjane@yahoo.com; 937-681-7127

Jane is a member of Church of the Cross UMC and currently plays in the handbell choir and sings in the choir. She is a National UMW Director representing West Ohio, which places her on both the District and the Conference UMW teams. Her occupation is as a Social Worker and Chemical Dependency Counselor in private practice at Midwest Behavioral Care, and Patricia Hayes & Associates. Jane loves Mission u, and has taught in schools for over thirty years and served as Assistant Dean and Dean of the West Ohio Mission u.

## Music Director

Rev. Justin Williams

pastorjustinwilliams@gmail.com; 937-369-6653



Justin is pastor at Coburn UMC in Zanesville, where "I share each week the word that God has placed on my heart. I cast vision, create systems, and pray for the future of our church. I lead our staff and lay leaders in helping Coburn to make disciples of Jesus Christ for the transformation of the world." When not working or spending time with his wife Chanda and two boys, Wesley and Walter, Justin enjoys music in all forms, running, reading, and playing with building toys; and he is an amateur magician.

# STUDY LEADERS

## **Study Leaders—Special Anniversary Study *Women United for Change—150 Years in Mission***

Jane Benner

See Jane's info on previous page under Worship Leaders.



Marcia Florkey

937-232-6990; mlbflorkey@gmail.com

Marcia was commissioned a Deaconess in 2001 and has served with Global Ministries of the UMC, the UMC NOMADS Mission program, and as executive director at New Path, Inc., the local mission outreach of Ginghamburg UMC. Currently she serves as a consultant with the Deaconess/Home Missioners office, National UMW. Marcia is married to Jim and they have three adult children, four grandchildren and enjoy travel, gardening and forest trekking!

Pat Marks

pnmarksdeaconess@gmail.com; 703-304-8030



Deaconess Pat N. Marks, Ph.D. is a dedicated criminal justice advocate called to promote criminal justice reform and effectively engage faith communities in providing services and resources for children and their families. Pat serves on the Leadership Team of Putting Mercy into Criminal Justice ([www.mercyjustice.net](http://www.mercyjustice.net)). Pat was commissioned as a Deaconess in 2005 concurrent to graduating from Wesley Theological Seminary and receiving the first Certificate in Missions for work in social justice. Pat has served on dozens of Kairos Prison Ministry teams in four prisons and as a volunteer lay chaplain in two prisons. She is a dynamic teacher and presenter; world traveler and returned Peace Corps Volunteer (Samoa).

Rev. Jeaninne Lewis Walker

513-617-6716; nean727@juno.com



Jéaninne is a native of Cincinnati where she lived in the community of Evanston with her parents and three brothers. York Street United Methodist Church has always been a strong part of her life, and is where she now serves as pastor. She attended Bennett College in Greensboro, NC, a historically black college related to the United Methodist Church. After answering God's call to make a full-time commitment to the ordained ministry, Jéaninne attended United Theological Seminary and earned her M.Div in May 1992. At the June 1994 Annual Conference, she was ordained an elder and became a full member of the West Ohio Conference. This year is Jéaninne's 25th Anniversary as an elder. She serves at York Street and New Vision UMC. She has worked in all areas of the church, especially with children and youth, United Methodist Women, issues relating to the history of African Americans in the United Methodist Church, and cultural awareness. She has most recently served as our Assistant Dean and Dean of Mission u. Jéaninne has one daughter and a host of other kids, grandkids, great-nieces and great-nephews which you may see with her from time to time.

# STUDY LEADERS

## Study Leaders—Spiritual Growth

### *Practicing Resurrection, The Gospel of Mark and Radical Hospitality*

Rev. Karen Brantley

ksbrantley86@gmail.com; 614-360-8169

Rev. Karen Brantley has a passion for serving the littlest of disciples as well as those on the fringes of the church. As a deacon, she has served within the local church, as well as alongside our Hispanic neighbors, the incarcerated, those battling addiction, and within our local schools. Karen serves at Grove City UMC as the Pastor of Adult Discipleship and Community Ministries.



Rev. Vernagaye Sullivan

revgrannyvs@gmail.com; (749) 739-8573

Vernagaye has served the United Methodist Church as a missionary in Nebraska, California and Oregon. She is a graduate of Methodist Theological School of Ohio, was ordained as a full Elder in the United Methodist Church in 1986, and has pastored nine churches in the West Ohio Conference, currently at Wayne UMC. United Methodist Women has always played an important role in Vernagaye's ministry. She has been a member since the age of 18, and has been president of her local unit. She has taught several times at schools of Christian Mission and Mission u, and is looking forward to joining us again. In her spare time, she likes to read historical fiction, do watercolor portraiture, play her guitar, hike and travel.



Don Hayashi

hayahidon@gmail.com; 937-890-2729 937-271-1614 (c)

Don Hayashi served on the staff of Wesley Community Center in Dayton until his retirement in 2013. He came to Dayton in 1990 and served as an Associate General Secretary of the General Council on Ministries for 14 years. He continues to be an active layperson at Sulphur Grove UMC in Huber Heights and serve on the Miami Valley District Leadership Team. He is married to Deb Dunlop, local UMW President, and they have an adult daughter.



Rev. Dr. Todd Anderson

tanderson@wocumc.org; 513-421-2057

Rev. Dr. Anderson was ordained an Elder in the West Ohio Conference in 1993, and is currently, Superintendent of The Ohio River Valley District. His 25 years of appointed service in West Ohio includes Hilliard, Linworth, Trinity, Defiance St. Paul's and Church of the Master. He has served as a strategic leader on multiple conference and district boards; and he is no stranger to Mission u, having previously served as our Dean, Assistant Dean, and a study leader.

Todd is a graduate of United Theological Seminary (D.Min. 1997), Candler School of Theology, Emory University 1991, and Union College 1988. He was a postdoctoral student and recipient of the Cousin's Fellowship in preaching at Emory University, which included a two-year study of Mark with an in-country tour of the Gospel in Israel and Palestine. Todd is married to Patricia Anderson who is an Insurance Broker in Cincinnati. Together they love to travel, read, garden, and play golf.



# STUDY LEADERS



## Youth Study Leader

Gail Douglas-Boykin  
gboykin903@yahoo.com

Gail is a retired police officer, having served with the NYPD for over 20 years, where she worked in various capacities with youth and young adults. She serves in ministry with the New York Conference Board of Ordained Ministry as the Coordinator of Ministerial Affairs, and served as a delegate for the 2019 Special Session of General Conference. A member of Vanderveer Park UMC in Brooklyn, Gail has served in multiple roles in her church, as well as at the District and Conference levels. She has chaperoned Youth Ambassador Mission trips to Ecuador, Cambodia, Antigua and Ghana. She states that children and youth are her passion and feels that her purpose is advocating for children and youth everywhere. Gail resides in Brooklyn, NY with her husband Princeton and their daughter Elise. She strives to live by the Golden Rule, *In everything do to others as you would have them do to you; for this is the law and the prophets.* ~ Matthew 7:12

# ADMINISTRATIVE STAFF



Elizabeth Vanoli, Dean  
vanolibeth@gmail.com; 937-901-9649

Beth has served on the Mission u committee for the last six years in a variety of roles and considers this experience at Mission u to be a valuable part of her spiritual growth and development. She is Vice President of St. Paul United Methodist Women in Dayton and has served the Miami Valley District as secretary and president. She is a long time practitioner and student of yoga, meditation, and centering prayer. Beth is currently a Mission Coordinator on the West Ohio Conference United Methodist Women's Lead Team.



Rev. Don Wilson, Assistant Dean  
614-271-2666; don.wilsonpastor@aol.com

Don Wilson is pastor of Gaines UMC in Cincinnati, Ohio. He has served full time in ministry for over two decades. Starting his journey as a Mission Intern, Don went on to serve as a church and community worker, student local pastor, and ultimately became an Ordained Elder. Don has a great love for all of God's creation and people. Romans 15:13 (NIV): May the God of hope fill you with all joy and peace as you trust in him, so that you may overflow with hope by the power of the Holy Spirit.

## Building our Legacy . . .

**Kathryn Maurer:** For 40 years, United Methodist Women Deaconess Kathryn Maurer greeted immigrants arriving in America with a smile, and came to be known as The Angel of Angel Island.

Starting in 1912, Maurer took the ferry every day to the Angel Island Immigration Center in San Francisco to greet immigrants, mostly from China, and help them adjust. Herself an immigrant and the youngest of nine children, she was a social worker who made sure the needs of the new arrivals, some of whom were detained for years, were met. She brought the families food and medical care, she taught them English, and wrote letters and appeals on their behalf. Along with women like Alma Mathews in New York, Maurer made sure that those new to this country were met with a warm welcome. She devoted herself to comforting those who were lost, traumatized or met with disdain. She truly embodied the UMW's vision of faith, hope and love in action.



# MISSIONARIES & MISSION PARTNERS

Soraya De Arco; sorayadearco@hotmail.com

Soraya is a missionary of the General Board of Global Ministries commissioned as a Church and Community Worker in 2009, assigned to Esperanza Viva (Living Hope) Community Center in Mason, Ohio, which is part of the Hispanic/Latino ministry of the West Ohio Annual Conference.



She grew up in Cali, Colombia. In 1992, she married a Methodist pastor, the Rev. Edinson de Arco, and helped to start a Methodist congregation in Cali. "I had my first ministerial experience in that congregation," she recalls. "By teaching biblical principles, and through the power of the Holy Spirit, I was able to witness a change in the lives of women and children. That was where I began my ministerial journey, when I accepted the challenge of working with young people afflicted by problems such as drug addiction, violence, and abuse."

Soraya received two law degrees in Colombia and entered into a family law practice. In 2000, she and her husband became missionaries with the Methodist Church in Panama, and two years later transferred to Hispanic/Latino ministry in South Carolina. They moved to Ohio in 2005.

The community center at Esperanza Viva is linked to a congregation of the same name, pastored by Rev. De Arco, in a multi-ethnic faith community. Its local partner is the Mason United Methodist Church. One objective is the renewal of an Hispanic faith community in West Chester, Mason, and Hamilton.

Of her decision to become a Church and Community Worker, Soraya says: "I feel the fervent desire to serve the Lord, which is why I decided to apply to become a missionary within The United Methodist Church. I see a great need in our communities, especially in the Hispanic community. . . Sometimes people begin to die in a world of fear, anxiety, and hopelessness. As for me, I have decided to die serving the God of power and not dying in the world's fears." Soraya and her husband are the parents of three children: Nora, Andres, and Edy.

## Church of the Messiah Mission Partnerships

Joining the panel will also be representatives from Church of the Messiah discussing some of their global mission partnerships:

- Jamie Weaver—Mexico;
- Preethi Mohan—India;
- Terry Tamasovich—Nicaragua;
- Rev. Jim Wilson—Cuba.

Contact: Carlene Triplett, carlenetriplett@yahoo.com; 614-439-0685



## Building our Legacy . . .



**Susan Angeline Collins** was an early trailblazer for United Methodist Women, and she was a remarkable woman before she ever entered the mission field. Born in 1851, the daughter of an indentured servant, she was the first African American student to attend Upper Iowa University. She went on to own her own laundry business. When she felt the call to serve the Methodist Church in missions to Africa, Collins sold her business to attend the Chicago Training School for home and foreign missions. She left for Africa in 1887, and worked 13 years for no pay under what was known as a self-supporting mission. Despite hardships, Collins established a boarding school which housed over 50 girls.

When she returned home for a visit in 1900, Collins was told, at age 50, that she was too old to continue as a missionary. She immediately began raising funds for a return passage to Africa, and with help from the Pacific branch of the Methodist Woman's Foreign Missionary Society, resumed her work in Angola, this time with pay, where she served 18 more years.

# MY NOTES

## **Building our Legacy . . .**

I hope you have enjoyed this series as much as I have enjoyed assembling the information. In the process of collecting the stories, I have learned so much about some of the women who helped to shape our history. From the beginning, United Methodist Women members have led the way in countless endeavors. Our membership is comprised of women compelled by their Christian faith to serve and lead in places near and far, and in ways never before imagined. This is what distinguishes United Methodist Women from other organizations, and attests to its longevity and relevance, today and in the years to come.

Mary Stephens,  
Communications Coordinator

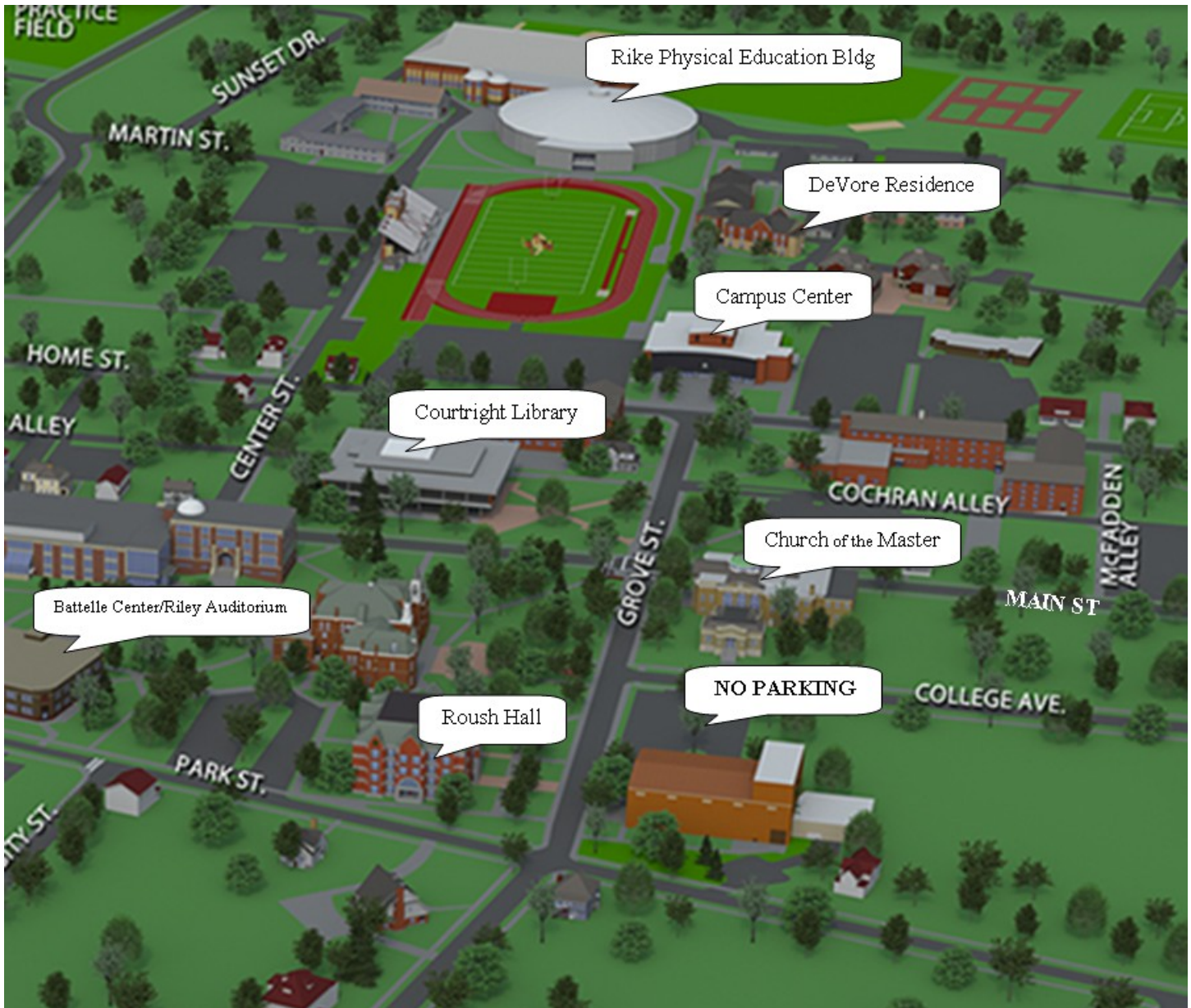




# CAMPUS MAP

## Parking

Parking is available for our use at any campus lot **except** for the Cowan/Admissions lot at College Ave and South Grove St. No stickers are required for our vehicles. Please note that Grove St between Main and Park will be closed Saturday morning for the Westerville farmer's market.



2019 West Ohio Cooperative



**Church of the Master**  
Love God, Grow in Christ, Live to Serve

